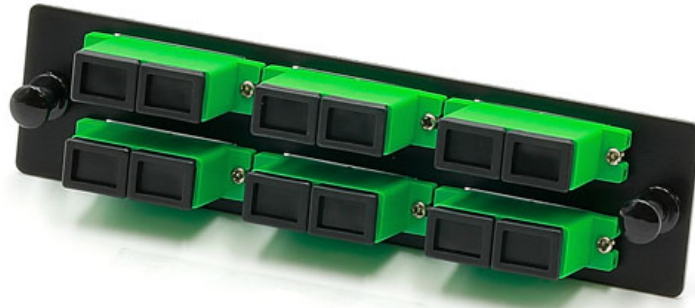


The GigaTech Products **GT-PLT-SCADS-6** fiber plate adapter provides versatile solution for high density fiber termination. Constructed from 1.5mm cold-rolled carbon steel, it features 6 SC-APC Duplex ports and supports up to 12 OS2 singlemode fibers. As with all GigaTech products, these plate adapters are tested for quality and reliability and are covered by our standard Lifetime Warranty.



### Features:

- 6x SC-APC Duplex Connectors
- Tool-less installation & removal
- Compatible with all LGX panels & enclosures
- Standard TIA/EIA-568.3-D color code

### Compliance:

- RoHS Compliant
- ISO9001
- TIA/EIA-568-C.3

### Applications:

- FHD Enclosures

**Warranty:** GigaTech Products Lifetime Warranty

### Specifications:

<b>Adapter Type</b>	SC-APC Duplex	<b>Fiber Mode</b>	OS2 9/125µm
<b>Ports</b>	6	<b>Fiber Count</b>	Up to 12
<b>Material</b>	SPCC Steel	<b>Mount Type</b>	Rack Mount
<b>Installation</b>	EIA 19" Rack Rails	<b>Loaded</b>	Unloaded
<b>Dimensions</b>	129.8 x 31.6 x 33mm	<b>Application</b>	FHD Enclosures

## Product Diagram:

### Specifications:

Panel Material: SPCC, 1.5mm thickness

Dimensions: 5.11" x 1.24" x 1.3" (129.8 x 31.6 x 33mm)

Weight: 0.065kg

Finish: Painted, Black (RAL9005)

Accessory: 2 pcs, Snap Rivet, Male Nylon/Female PC

Adaptor: 6x SC Duplex

