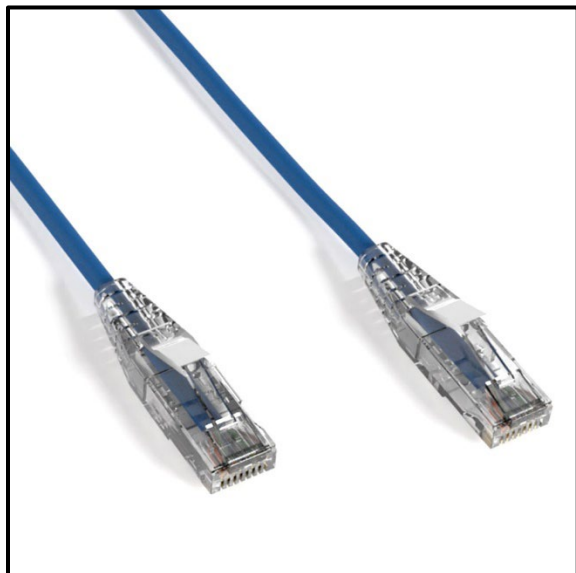


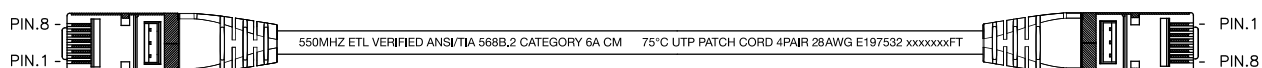
The GigaTech Products **GT-C6A28MB-xyFT** copper patch cord is tooled using state-of-the-art equipment and high quality UL, CM rated jackets. All of our copper patch cords feature solid 28AWG wires and are designed with a narrow profile, and will deliver enhanced performance in high density applications.



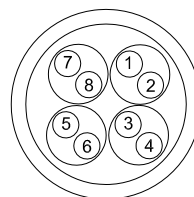
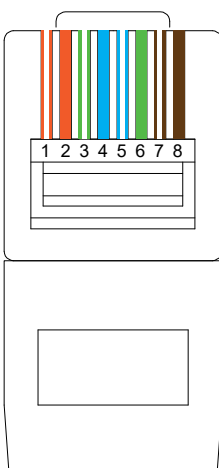
Features

- UL, CM Rated Jacket
- 4 Pair, 100% Copper, 28 AWG
- Slim Molded Snag-free Claw Boots (Ultra flexible)
- Elongated Mod Plugs for "Deep" depth switching cavities

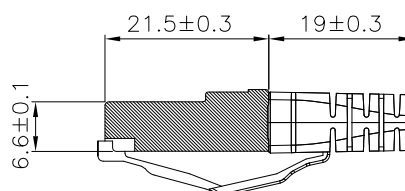
Length Available: $\geq 100\text{m}$



CONNECTIONS		
P1	COLOR	P2
1	OR/WH	1
2	OR	2
3	GN/WH	3
4	BL	4
5	BL/WH	5
6	GN	6
7	BR/WH	7
8	BR	8



- 1.ORANGE
- 2.WHITE/ORANGE
- 3.LIGHT BLUE
- 4.WHITE/LIGHT BLUE
5. BROWN
- 6.WHITE/BROWN
- 7.LIGHT GREEN
- 8.WHITE/LIGHT GREEN



Warranty:

GigaTech Branded Cables- Lifetime Warranty