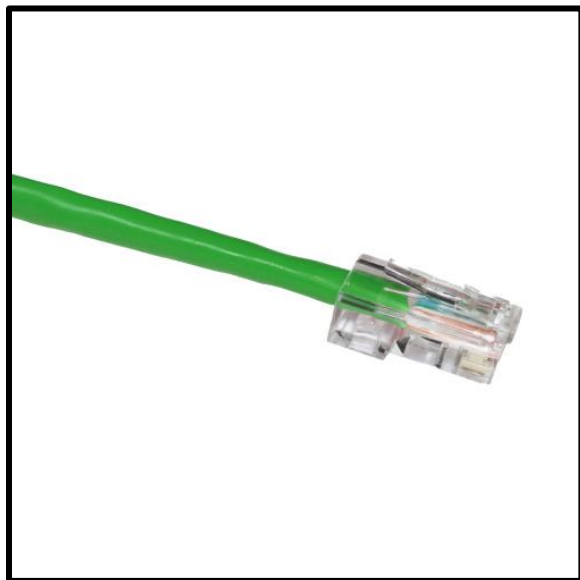


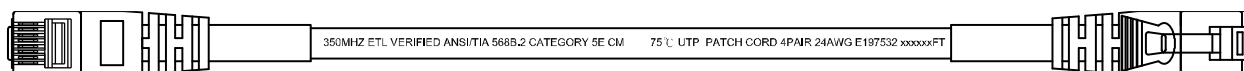
The GigaTech Products **GT-C5ENB-xy** copper patch cord is tooled using state-of-the-art equipment and high-quality UL, CM rated jackets. All of our copper patch cords feature solid 24AWG wires and are designed with a narrow profile, and will deliver enhanced performance in high density applications.



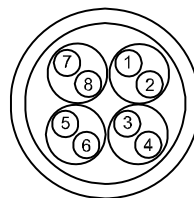
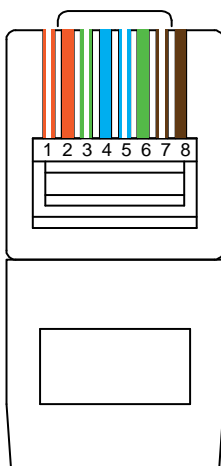
Features

- UL, CM Rated Jacket
- 4 Pair, 100% Copper, 24 AWG
- Elongated Mod Plugs for "Deep" depth switching cavities
- 50um Gold Plating on Mod-Plug contacts

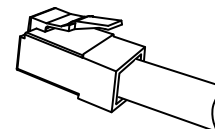
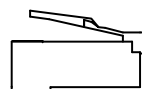
Length Available: ≥ 100m



CONNECTIONS		
P1	COLOR	P2
1	OR/WH	1
2	OR	2
3	GN/WH	3
4	BL	4
5	BL/WH	5
6	GN	6
7	BR/WH	7
8	BR	8



1. ORANGE
2. WHITE/ORANGE
3. LIGHT BLUE
4. WHITE/LIGHT BLUE
5. BROWN
6. WHITE/BROWN
7. LIGHT GREEN
8. WHITE/LIGHT GREEN



Warranty:

GigaTech Branded Cables- Lifetime Warranty